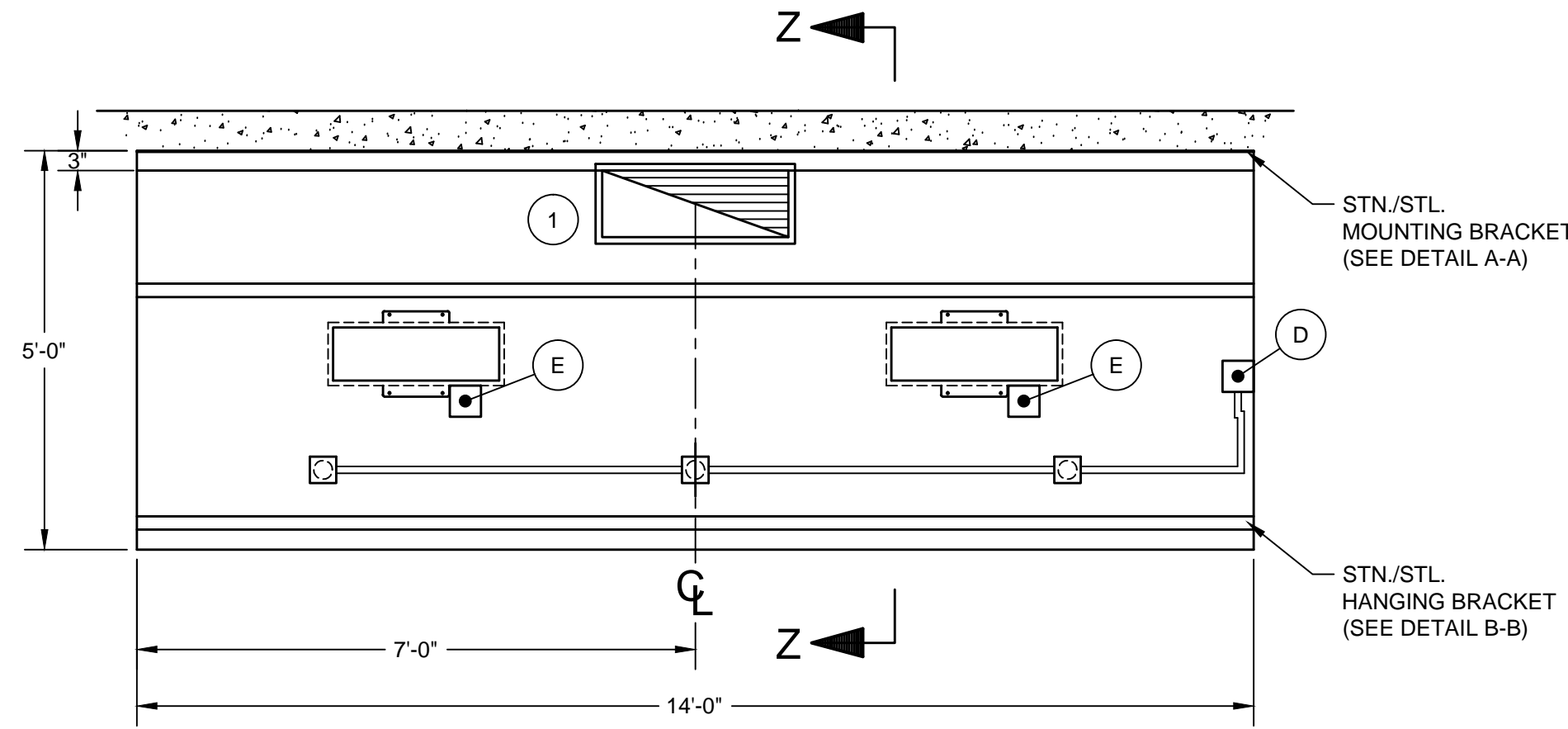


NOTE:
K.E.C. MUST VERIFY THE EXACT DIMENSION OF THE COOKING EQUIPMENT FROM EITHER THE WALL OR FROM THE FRONT OF THE HOOD, SO CADDY MAY PROPERLY LOCATE THE FIRE PROTECTION NOZZLES AT TIME-OF-FABRICATION IN THE FACTORY. IF EQUIPMENT IS NOT LOCATED AS SHOWN AND THE DRAWING IS APPROVED FOR FABRICATION, THEN NOZZLES MUST BE RELOCATED AT THE EXPENSE OF OTHERS.

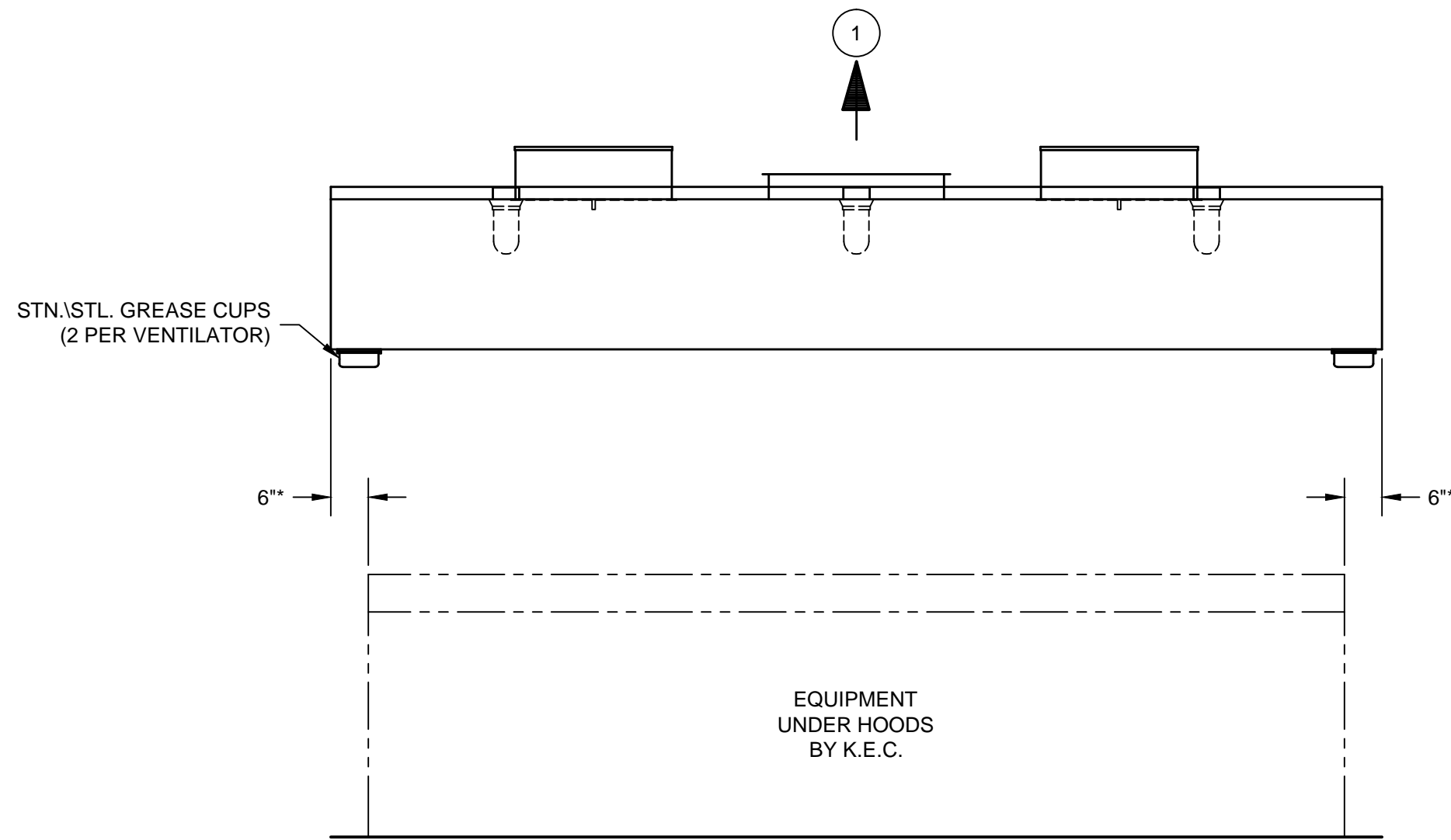
CONTRACTOR NOTE:
ALLOW SUFFICIENT ACCESS ON TOP OF VENTILATOR TO SERVICE COMPONENTS AND UTILITIES

MAKE-UP AIR NOTE:
AIR TEMPERATURE SHOULD RANGE FROM 60° TO 65° F, BUT MAY BE AS LOW AS 50° F DEPENDING ON AIR VOLUME, DISTRIBUTION, AND INTERNAL HEAT LOAD

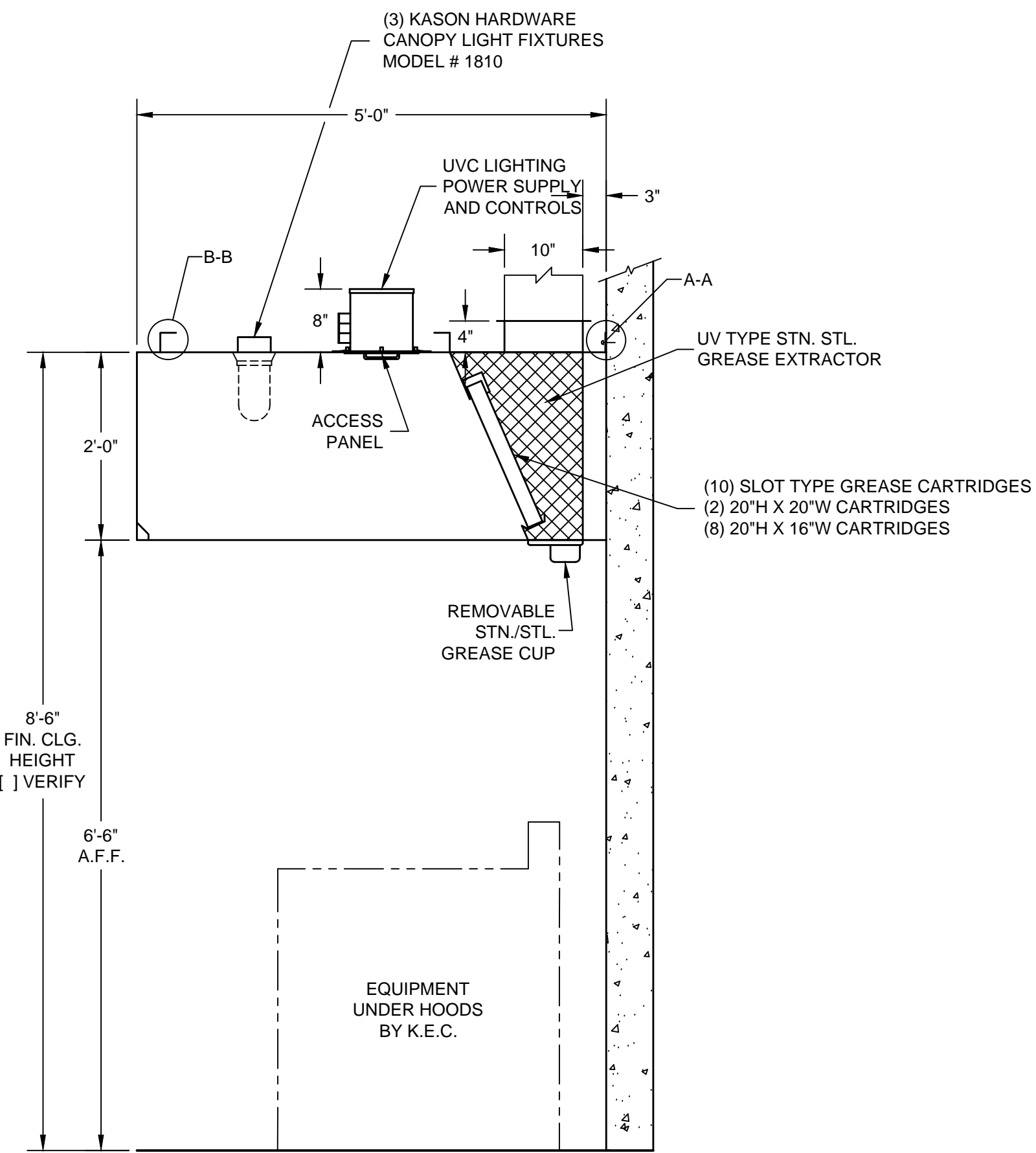


PLAN
SCALE: 1/2"=1'-0"

TOTAL EXHAUST : 3,500 C.F.M.
1 10" X 28" EXHAUST DUCT
3,500 C.F.M. @ 1.30" S.P.



ELEVATION
SCALE: 1/2"=1'-0"



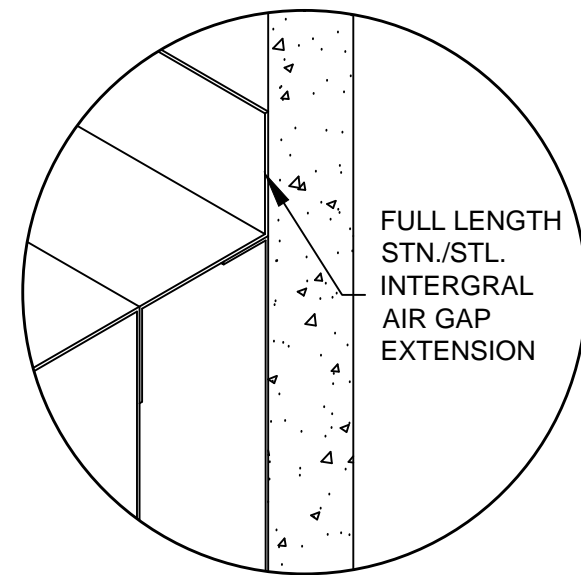
SECTION Z-Z
SCALE: 3/4"=1'-0"

ELECTRICAL NOTES:

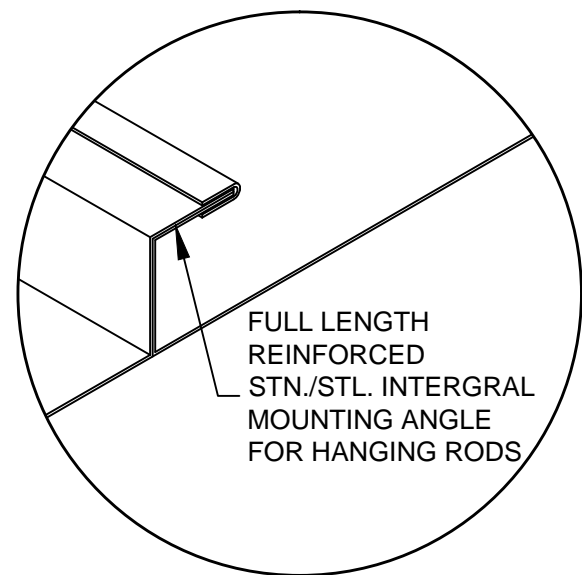
1. LIGHT FIXTURES, VAPORPROOF, U.L. LISTED, FURNISHED, INSTALLED AND WIRED TO J-BOX (D) BY CADDY. RECONNECTED ON JOBSITE BY ELECTRICAL CONTRACTOR.
2. LIGHT SWITCH FOR LIGHT FIXTURE WITH 120 VOLTS A.C. SERVICE BY ELECTRICAL CONTRACTOR.
3. UVC LIGHT CONTROL BOX FURNISHED AND INSTALLED BY CADDY, 120V SUPPLY AND INTERLOCK WIRING TO EACH JUNCTION BOX (E) BY ELECTRICAL CONTRACTOR.

GENERAL NOTES

- EXHAUST AIR REQUIREMENTS:**
1. EXHAUST C.F.M. BASED ON 250 C.F.M. PER LINEAR FOOT.
 2. EXHAUST STATIC PRESSURE IS 1.30" W.G. AT DUCT TAKE-OFF COLLAR. TOTAL DUCT STATIC MUST BE ADDED. STATIC BASED ON OPERATION AT MEAN SEA LEVEL.
 3. DUCT SIZE BASED ON 1800 F.P.M..
- EXHAUST FAN REQUIREMENTS:**
1. TYPE - INDUCED DRAFT, SQUIRREL CAGE, BACKWARD INCLINED BLADES, EXHAUST FAN DISCHARGE SHOULD BE VERTICAL, AWAY FROM AIR INTAKES. FAN FURNISHED BY OTHERS.
 2. EXHAUST FAN MUST BE FURNISHED WITH A MAGNETIC STARTER WITH 120 VOLT HOLDING COIL. STARTER FURNISHED BY OTHERS.
- MAKE-UP AIR REQUIREMENTS:**
1. AIR EXHAUSTED FROM KITCHEN MUST BE REPLACED - WITH DISTRIBUTION CONTROLLED TO PROVIDE FOR TOTAL KITCHEN VENTILATION AND TO ESTABLISH NECESSARY AIR PATTERNS FOR PROPER PERFORMANCE OF THE VENTILATORS. AIR DISTRIBUTION SYSTEMS SHALL BE IN ACCORDANCE WITH ALL GOVERNING CODES.
 1. MAKE-UP AIR MUST BE TEMPERED - HEATED OR COOLED - CONSISTENT WITH THE STYLE OF HOOD, HEAT LOAD, CLIMATIC CONDITIONS AND APPLICABLE CODES.
- INSTALLATION:**
1. VENTILATORS TO BE INSTALLED IN ACCORDANCE WITH ALL CODES.
- CONTRACTORS MUST REVIEW APPLICABLE CODES WITH CODE AUTHORITIES BEFORE APPROVING DRAWINGS FOR FABRICATION. SPECIAL ATTENTION MUST BE GIVEN TO CODE REGULATIONS RELATIVE TO CLEARANCES FROM SURROUNDING COMBUSTIBLE CONSTRUCTION (WALL, CEILINGS, ETC.).**
1. ALL DUCTWORK BEYOND VENTILATOR DUCT TAKE-OFF COLLAR TO BE PROVIDED AND INSTALLED BY OTHERS, IN ACCORDANCE WITH JURISDICTIONAL CODES. DUCTS MUST BE MECHANICALLY STRONG, GREASE AND WATER TIGHT.
 2. MOUNTING RODS FURNISHED AND INSTALLED BY OTHERS.
- CONSTRUCTION:**
1. VENTILATORS TO BE MANUFACTURED IN STRICT ACCORDANCE WITH CADDY SPECIFICATIONS.
 2. VENTILATORS CONSTRUCTED OF 18 GA. STAINLESS STEEL.
- FIRE PROTECTION:**
1. SURFACE FIRE PROTECTION PROVIDED AND INSTALLED BY K.E.C.
 2. CAUTION: SURFACE FIRE PROTECTION SYSTEM INSTALLATION MUST BE COORDINATED WITH CADDY TO PREVENT SYSTEMS INTERFERENCE WITH VENTILATOR'S OPERATION/PERFORMANCE. IMPROPER INSTALLATION MAY VOID U.L. LISTINGS OF THE EQUIPMENT.
 3. IMPORTANT NOTE: NFPA 96 REQUIRES THAT ALL GAS AND ELECTRIC COOKING EQUIPMENT THAT IS PROTECTED BY A SURFACE FIRE PROTECTION SYSTEM MUST AUTOMATICALLY SHUT OFF UPON ACTIVATION OF THE SYSTEM.
- ELECTRICAL REQUIREMENTS:**
1. LIGHT FIXTURE BULBS PROVIDED AND INSTALLED BY OTHERS.



MOUNTING BRACKET DETAIL A-A
SCALE: 1/4"=1"



HANGING BRACKET DETAIL B-B
SCALE: 1/4"=1"

K.E.C. TO VERIFY ALL MAKES AND MODELS OF COOKING EQUIPMENT. REVIEW PLAN FOR PROPER LINE-UP PRIOR TO FABRICATION OF VENTILATORS, AND TO NOTIFY CADDY OF ANY CHANGES.

* - MINIMUM OVERHANG FROM EDGE OF COOKING EQUIPMENT TO END OF HOOD MUST BE 6"

GENERAL CONTRACT CONDITIONS
ELECTRICAL WORK DONE BY CADDY CORPORATION IS EXECUTED IN COMPLIANCE WITH STANDARDS PUBLISHED BY THE UNDERWRITER'S LABORATORIES, INC. INSOFAR AS APPLICABLE, AND THE LATEST EDITION OF THE NATIONAL ELECTRICAL CODE (NEC). CADDY CORPORATION DOES NOT ACCEPT ANY RESPONSIBILITY FOR THE REQUIREMENTS OF ANY REGIONAL AND/OR LOCAL CODES THAT ADD OR DEVIATED FROM THE ACCEPTED STANDARDS OF THE ABOVE AGENCIES. ANY FIELD WORK RELATING TO THE MODIFICATION OF ELECTRIC OR PLUMBING SYSTEMS, TO MEET REGIONAL OR LOCAL CODE REQUIREMENTS IS TO BE DONE BY OTHERS AND WITHOUT BACK CHARGES TO CADDY CORPORATION, UNLESS THESE CONDITIONS WERE PREVIOUSLY BROUGHT TO OUR ATTENTION AND ARE EXPRESSLY INCLUDED IN OUR WRITTEN QUOTATION.
ALL WIRING AND PLUMBING AT THE JOB SITE IS THE RESPONSIBILITY OF OTHERS. EQUIPMENT WILL BE CONSTRUCTED IN ACCORDANCE WITH OUR DRAWING(S) WHICH MUST BE APPROVED PRIOR TO FABRICATION. ANY SUBSEQUENT CHANGES REQUIRED MUST BE SUBMITTED TO US IN WRITING AND ACKNOWLEDGED ON OUR STANDARD FORM.

INSTALLATION INFORMATION
ALLOW SUFFICIENT ACCESS TO BRING VENTILATOR INTO KITCHEN AREA. MAXIMUM VENTILATOR DIMENSIONS 14'-0" LONG x 5'-0" WIDE x 32" HIGH. ESTIMATED TOTAL HANGING WEIGHT: 1,608 LBS.

VENTILATOR TO BE SHIPPED IN (1) UNIT. ALL PLUMBING AND ELECTRICAL DISCONNECTED FOR SHIPMENT. RECONNECTED IN FIELD BY PLUMBING AND ELECTRICAL CONTRACTORS.

ROUGH-IN SCHEDULE		
SYM	QTY	DESCRIPTION
D	1	120V, 60HZ, 1PH, 0.30 K.W. CONNECTED LOAD
E	2	120V, 60HZ, 1PH, 0.72 K.W. CONNECTED LOAD (EACH)

REVISIONS			
REV	DATE	BY	REMARKS
A	7-1-04	BAH	NO CHANGES TO THIS SHEET.
B	7-14-04	DRA	NO CHANGES TO THIS SHEET.

CADDY AirSystems
509 SHARPTOWN ROAD
P.O. BOX 345 BRIDGEPORT NJ 08014
Tel:(856) 467-4222 Fax:(856) 467-5511

EQUIPMENT SCHEDULE

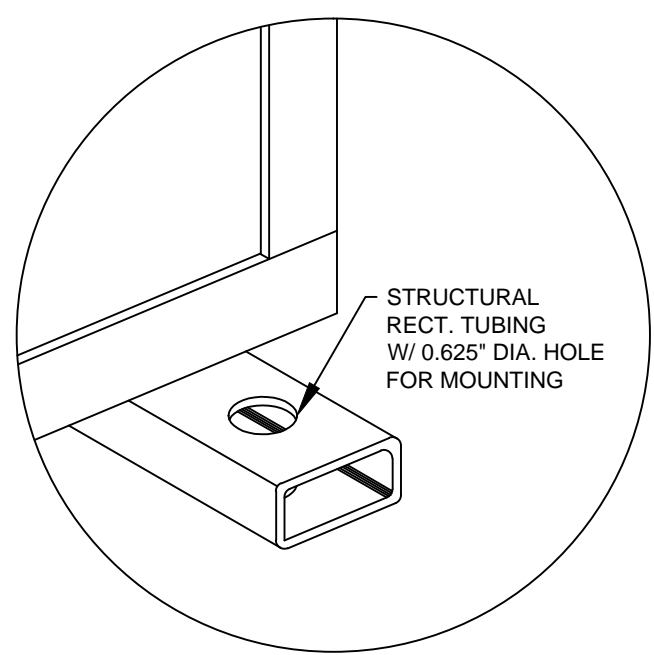
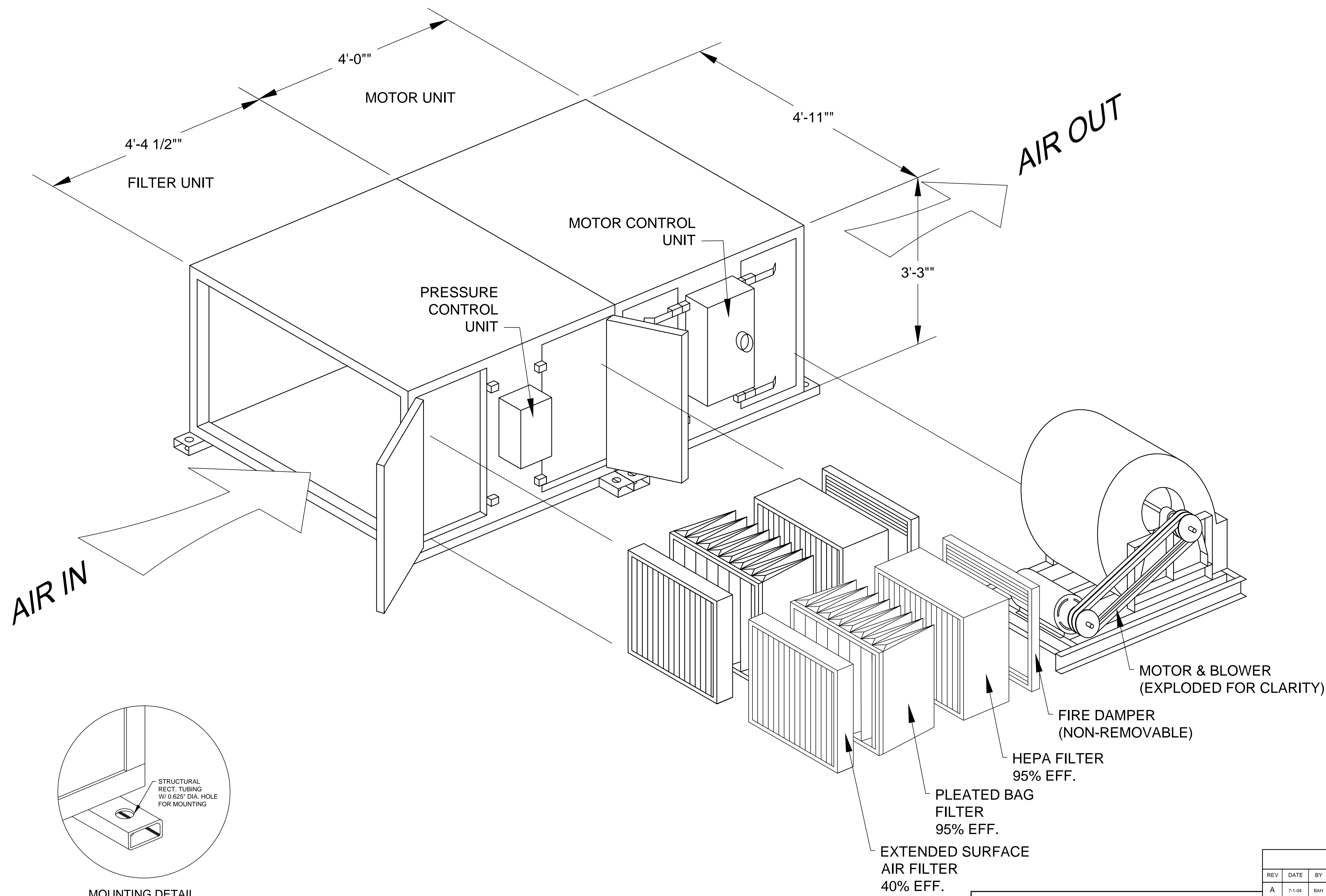
SH-BCU-60

CADDY NO. 1245-1 ITEM NO. 1

JOB: MOE'S SOUTH WEST GRILL/BEAUVALLON
LOC: DENVER, CO.
CUST:
CUST#:

DATE: 06/15/04 SCALE: AS NOTED
DR BY: DRA APP'D BY:

DWG# D-1-1245 SHT 1 OF 4



MOUNTING DETAIL
SCALE: 3/4"=1'-0"

GENERAL CONTRACT CONDITIONS
ELECTRICAL WORK DONE BY CADDY CORPORATION IS EXECUTED IN COMPLIANCE WITH STANDARDS PUBLISHED BY THE UNDERWRITER'S LABORATORIES, INC. INSOFAR AS APPLICABLE, AND THE LATEST EDITION OF THE NATIONAL ELECTRICAL CODE (NEC). CADDY CORPORATION DOES NOT ACCEPT ANY RESPONSIBILITY FOR THE REQUIREMENTS OF ANY REGIONAL AND/OR LOCAL CODES THAT ADD OR DEVIATED FROM THE ACCEPTED STANDARDS OF THE ABOVE AGENCIES. ANY FIELD WORK RELATING TO THE MODIFICATION OF ELECTRIC OR PLUMBING SYSTEMS, TO MEET REGIONAL OR LOCAL CODE REQUIREMENTS IS TO BE DONE BY OTHERS AND WITHOUT BACK CHARGES TO CADDY CORPORATION, UNLESS THESE CONDITIONS WERE PREVIOUSLY BROUGHT TO OUR ATTENTION AND ARE EXPRESSLY INCLUDED IN OUR WRITTEN QUOTATION.
ALL WIRING AND PLUMBING AT THE JOB SITE IS THE RESPONSIBILITY OF OTHERS. EQUIPMENT WILL BE CONSTRUCTED IN ACCORDANCE WITH OUR DRAWING(S) WHICH MUST BE APPROVED PRIOR TO FABRICATION. ANY SUBSEQUENT CHANGES REQUIRED MUST BE SUBMITTED TO US IN WRITING AND ACKNOWLEDGED ON OUR STANDARD FORM.

DIMENSIONAL DATA	
LENGTH OF FILTER UNIT	4'-4 1/2"
LENGTH OF MOTOR UNIT	4'-0"
WIDTH OF FILTER/ODOR UNIT	4'-11"
WIDTH OF MOTOR UNIT	4'-11"
HEIGHT OF FILTER/ODOR UNIT	3'-3"
HEIGHT OF MOTOR UNIT	3'-3"

"PURE-AIR" GREASE & ODOR REDUCTION SYSTEM
3,500 CFM

REVISIONS			
REV	DATE	BY	REMARKS
A	7-1-04	BAH	NO CHANGES TO THIS SHEET.
B	7-14-04	DRA	NO CHANGES TO THIS SHEET.

CADDY AirSystems
509 SHARPTOWN ROAD
P.O. BOX 345 BRIDGEPORT NJ 08014
Tel:(856) 467-4222 Fax:(856) 467-5511

EQUIPMENT SCHEDULE

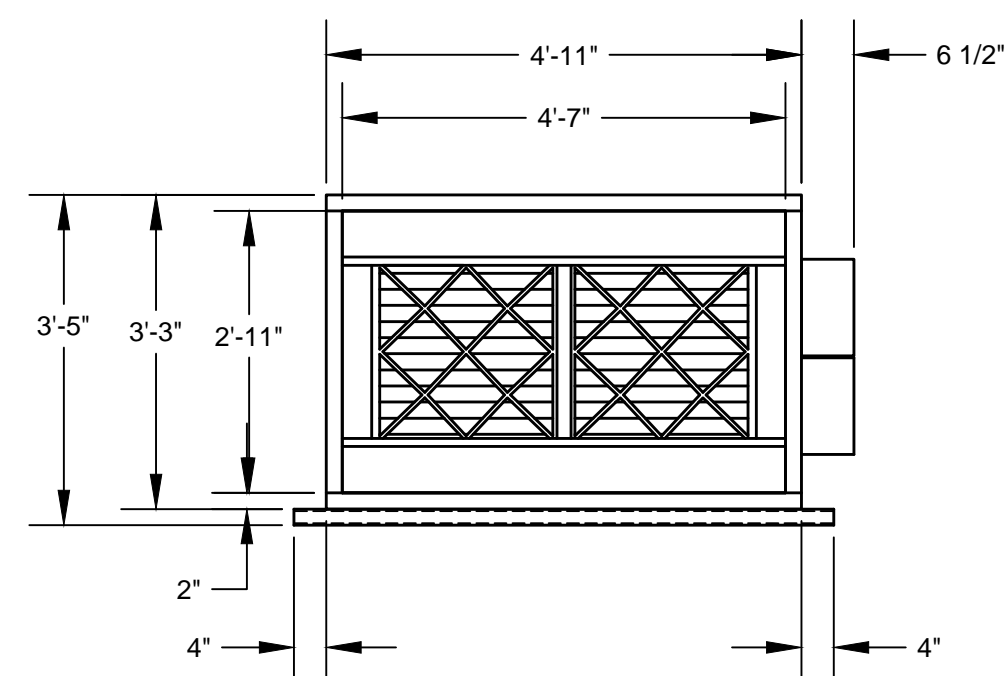
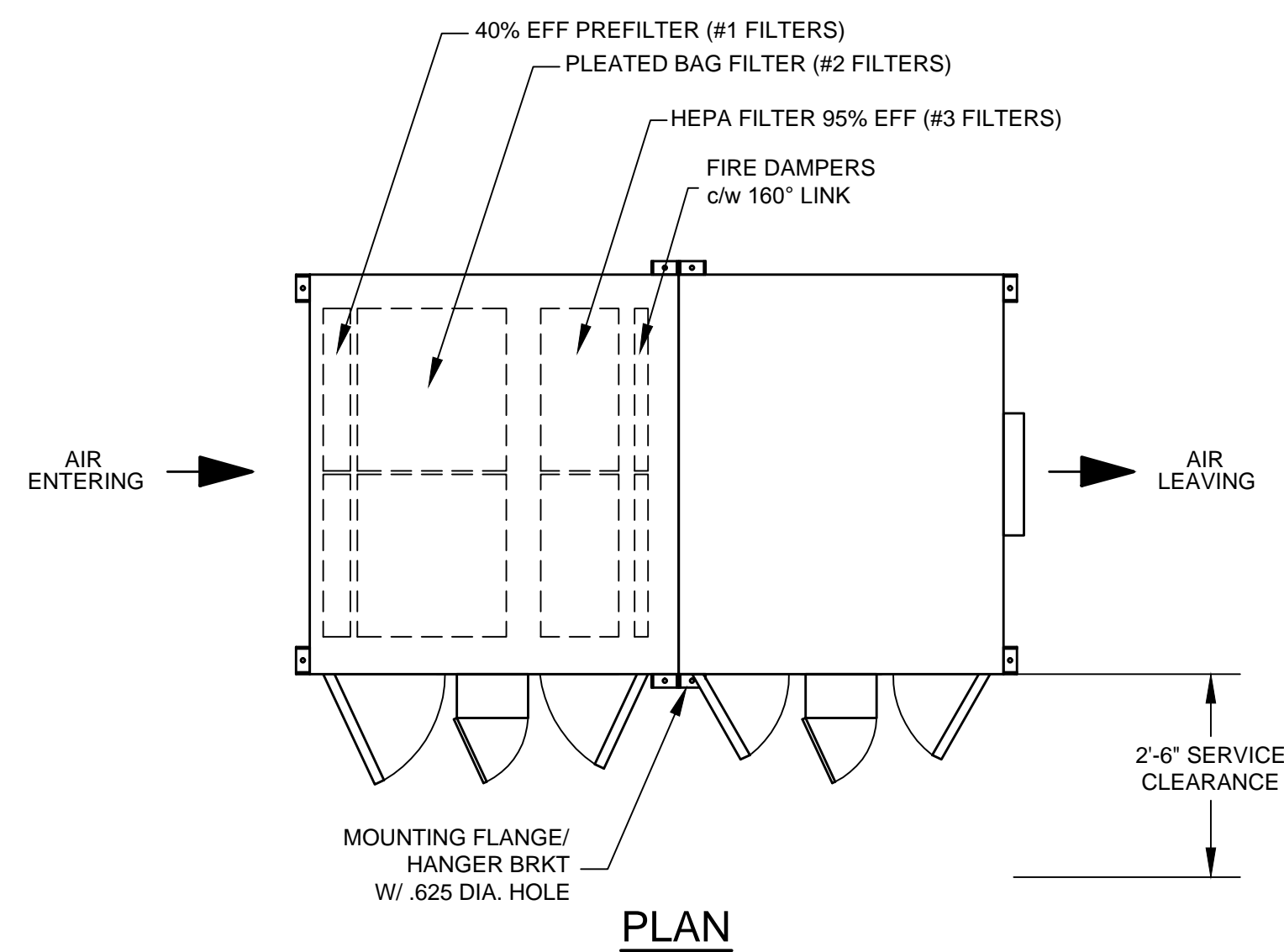
CAS-KEF-4000
ISOMETRIC WITHOUT ODOR

CADDY NO. 1245-1 ITEM NO. 2

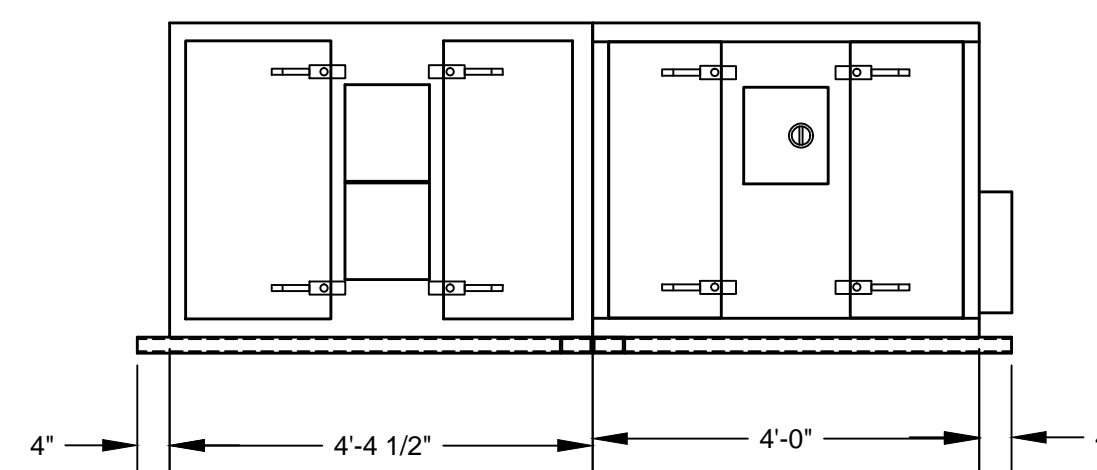
JOB: MOE'S SOUTHWEST GRILL/BEAUVALLON
LOC: DENVER, CO.
CUST:
CUST#:

DATE	06/15/04	SCALE	AS NOTED
DR BY	DRA	APP'D BY	

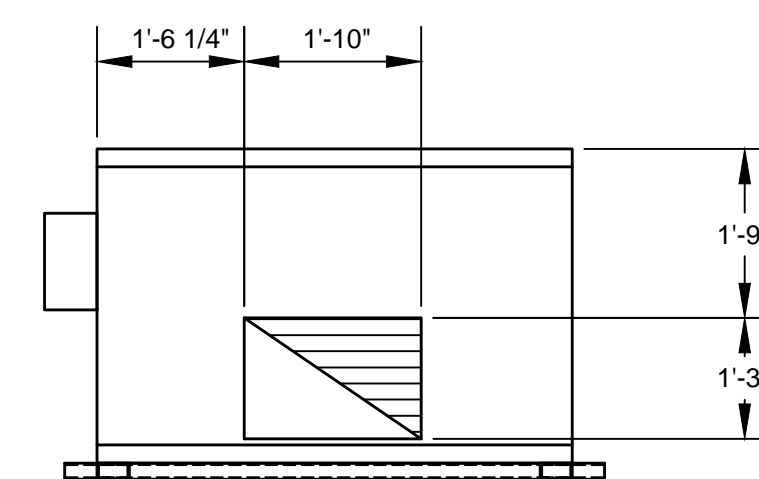
DWG# D-1-1245 SHT 2 OF 4



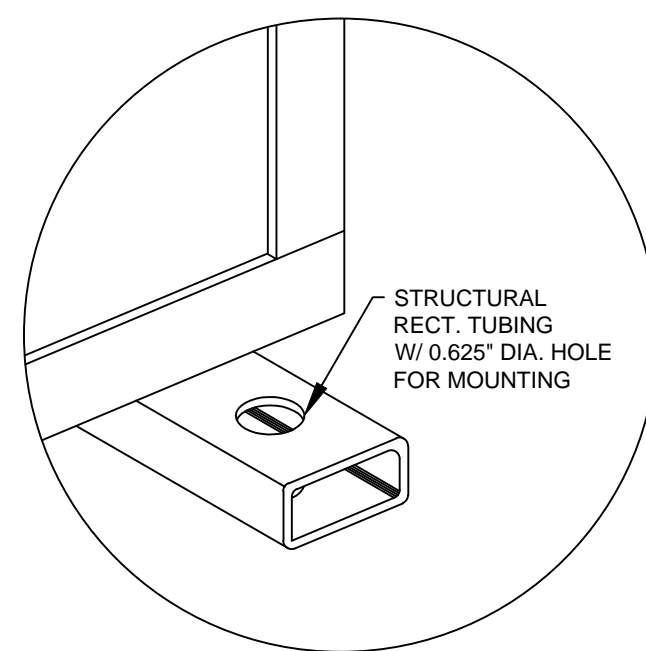
**LEFT END
 (AIR ENTERING)**



**ELEVATION
 (RIGHT HAND ACCESS SIDE)**



**RIGHT END
 (AIR LEAVING)**



MOUNTING DETAIL
 SCALE: 3/4"=1'-0"

GENERAL CONTRACT CONDITIONS
 ELECTRICAL WORK DONE BY CADDY CORPORATION IS EXECUTED IN COMPLIANCE WITH STANDARDS PUBLISHED BY THE UNDERWRITER'S LABORATORIES, INC. INsofar AS APPLICABLE, AND THE LATEST EDITION OF THE NATIONAL ELECTRICAL CODE (NEC). CADDY CORPORATION DOES NOT ACCEPT ANY RESPONSIBILITY FOR THE REQUIREMENTS OF ANY REGIONAL AND/OR LOCAL CODES THAT ADD OR DEVIATED FROM THE ACCEPTED STANDARDS OF THE ABOVE AGENCIES. ANY FIELD WORK RELATING TO THE MODIFICATION OF ELECTRIC OR PLUMBING SYSTEMS, TO MEET REGIONAL OR LOCAL CODE REQUIREMENTS IS TO BE DONE BY OTHERS AND WITHOUT BACK CHARGES TO CADDY CORPORATION, UNLESS THESE CONDITIONS WERE PREVIOUSLY BROUGHT TO OUR ATTENTION AND ARE EXPRESSLY INCLUDED IN OUR WRITTEN QUOTATION.
 ALL WIRING AND PLUMBING AT THE JOB SITE IS THE RESPONSIBILITY OF OTHERS. EQUIPMENT WILL BE CONSTRUCTED IN ACCORDANCE WITH OUR DRAWING(S) WHICH MUST BE APPROVED PRIOR TO FABRICATION. ANY SUBSEQUENT CHANGES REQUIRED MUST BE SUBMITTED TO US IN WRITING AND ACKNOWLEDGED ON OUR STANDARD FORM.

FILTER DATA- AT FULL LOAD CAPACITY						GENERAL DATA		MOTOR DATA	
FILTER NO.	TYPE	SIZE	CAPACITY	QTY.	S.P.(IN W.C.)	MAXIMUM AIR EXHAUST	4,000 C.F.M.	HORSEPOWER	7 HP
1	40% PRE-FILTER	24" X 12" X 4"	1,000 CFM	0		DESIGN AIR EXHAUST	3,500	POWER	4.05 BHP
		24" X 24" X 4"	2,000 CFM	2		TOTAL STATIC PRESSURE	5" W.C.	FULL LOAD AMPS	24.5
2	PLEATED BAG FILTER	24" X 12" X 22"	1,000 CFM	0		EXTERNAL STATIC PRESSURE	2.0" W.C.	MOTOR RPM	2808
		24" X 24" X 22"	2,000 CFM	2		PANEL ACCESS	RIGHT	VOLTAGE	208/3/60
3	95% HEPA FILTER	24" X 12" X 11.5"	1,000 CFM	0		FILTER SECTION WEIGHT	1,569 LBS.	PHASE	3
		24" X 24" X 11.5"	2,000 CFM	2		MOTOR SECTION WEIGHT	1,430 LBS.	INDOOR/ OUTDOOR	INDOOR
MOUNTING						FLOOR			

REVISIONS			
REV	DATE	BY	REMARKS
A	7-1-04	BAH	CHANGED ELECTRICAL MOTOR DATA
B	7-14-04	DRA	NO CHANGES TO THIS SHEET

DATE: 06/15/04 SCALE: AS NOTED
 DR BY: DRA APP'D BY:

CADDY AirSystems
 509 SHARPTOWN ROAD
 P.O. BOX 345 BRIDGEPORT NJ 08014
 Tel:(856) 467-4222 Fax:(856) 467-5511

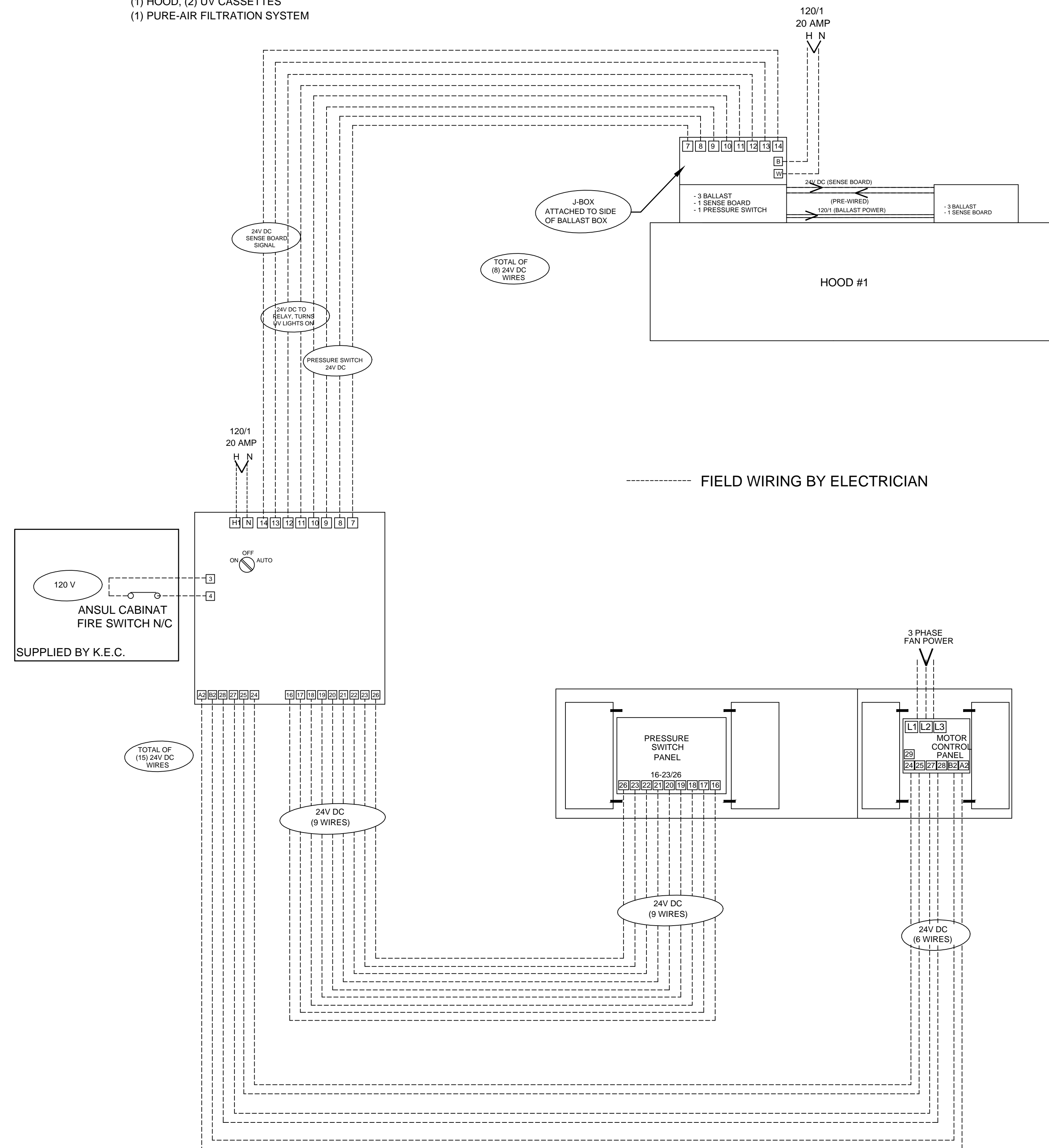
EQUIPMENT SCHEDULE
 CAS-KEF-4000
 GENERAL LAYOUT WITHOUT ODOR

CADDY NO. 1245-1 ITEM NO. 2

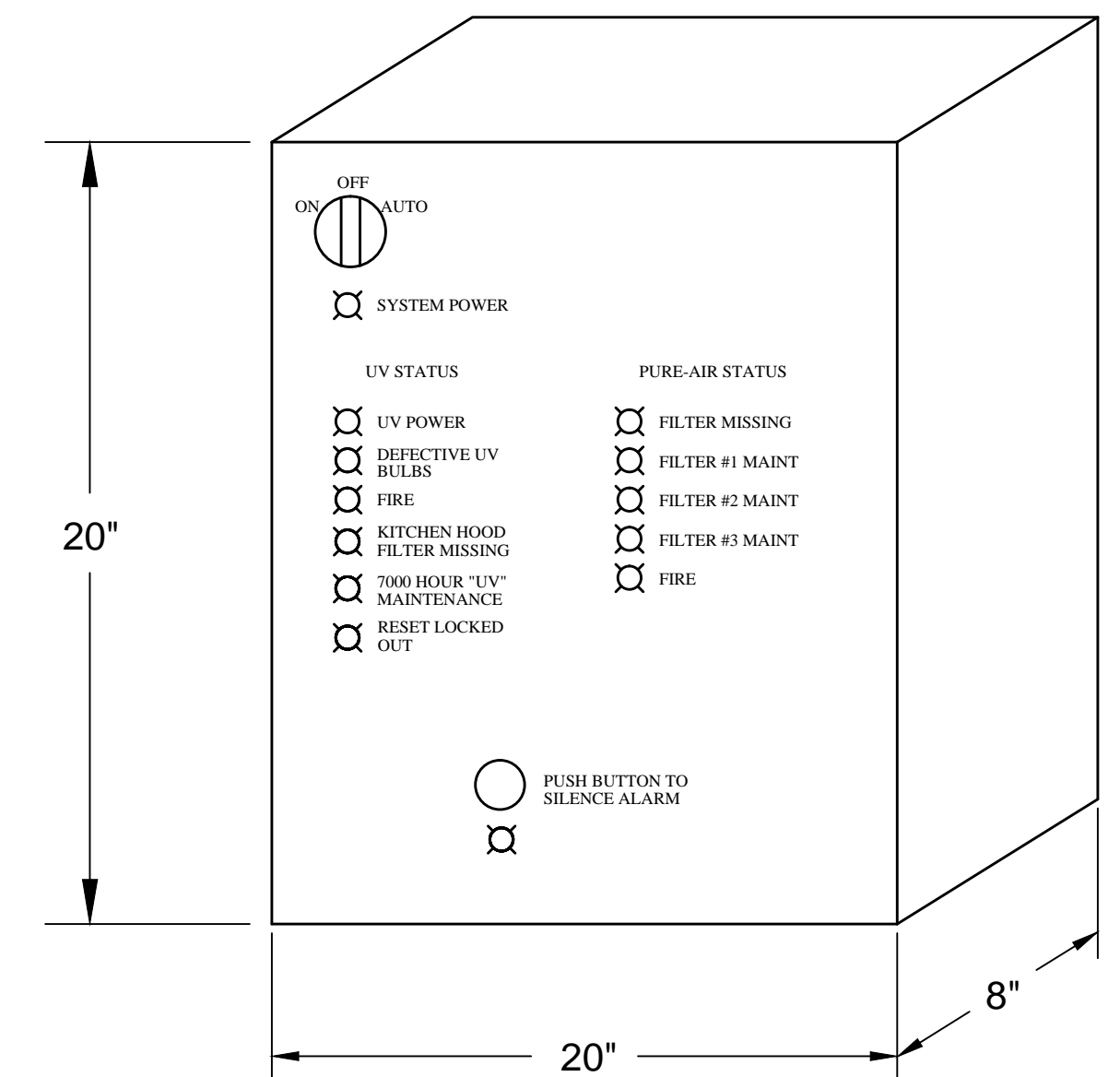
JOB: MOE'S SOUTHWEST GRILL/BEAUVALLON
 LOC: DENVER, CO.
 CUST:
 CUST#:

DWG# D-1-1245 SHT 3 OF 4

FIELD WIRING FOR UV CANOPY HOOD & PURE-AIR FILTRATION SYSTEM
 (1) HOOD, (2) UV CASSETTES
 (1) PURE-AIR FILTRATION SYSTEM



ELECTRICIAN TO POSITION CABINATE HOLES FOR WIRING AS REQUIRED ON SITE



GENERAL CONTRACT CONDITIONS
 ELECTRICAL WORK DONE BY CADDY CORPORATION IS EXECUTED IN COMPLIANCE WITH STANDARDS PUBLISHED BY THE UNDERWRITER'S LABORATORIES, INC. INSOFAR AS APPLICABLE, AND THE LATEST EDITION OF THE NATIONAL ELECTRICAL CODE (NEC). CADDY CORPORATION DOES NOT ACCEPT ANY RESPONSIBILITY FOR THE REQUIREMENTS OF ANY REGIONAL AND/OR LOCAL CODES THAT ADD OR DEVIATED FROM THE ACCEPTED STANDARDS OF THE ABOVE AGENCIES. ANY FIELD WORK RELATING TO THE MODIFICATION OF ELECTRIC OR PLUMBING SYSTEMS, TO MEET REGIONAL OR LOCAL CODE REQUIREMENTS IS TO BE DONE BY OTHERS AND WITHOUT BACK CHARGES TO CADDY CORPORATION, UNLESS THESE CONDITIONS WERE PREVIOUSLY BROUGHT TO OUR ATTENTION AND ARE EXPRESSLY INCLUDED IN OUR WRITTEN QUOTATION.
 ALL WIRING AND PLUMBING AT THE JOB SITE IS THE RESPONSIBILITY OF OTHERS. EQUIPMENT WILL BE CONSTRUCTED IN ACCORDANCE WITH OUR DRAWING(S) WHICH MUST BE APPROVED PRIOR TO FABRICATION. ANY SUBSEQUENT CHANGES REQUIRED MUST BE SUBMITTED TO US IN WRITING AND ACKNOWLEDGED ON OUR STANDARD FORM.

REVISIONS			
REV	DATE	BY	REMARKS
B	7-14-04	DRA	REVISED CRE-UV PANELS AND WIRING PER CONVERSATION WITH TOM CARTER AND BILL JACOBS

<p>CADDY AirSystems 509 SHARPTOWN ROAD P.O. BOX 345 BRIDGEPORT NJ 08014 Tel:(856) 467-4222 Fax:(856) 467-5511</p>	
<p>EQUIPMENT SCHEDULE</p> <p>FIELD WIRING REQUIREMENTS FOR THE UV-C HOOD EQUIPMENT AND THE CAS FILTERING EXHAUST SYSTEM</p>	
CADDY NO. 1245	ITEM NO. 1A
JOB: MOE'S SOUTH WEST GRILL/BEAUVALLON LOC: DENVER, CO. CUST: CUST#:	
DATE: 07/14/04	SCALE: AS NOTED
DR BY: DRA	APP'D BY:

DWG# D-1-1245

SHT 4
OF 4